



BROCHURE

BALAJI EAST

BALAJI
CONSTRUCTIONS



BALAJI EAST

Experience the true essence of luxurious living in the heart of Visakhapatnam with Balaji Constructions.





Introduction

Welcome to Balaji East –
Where Luxury Meets Serenity!

We are thrilled to introduce our latest project, Balaji East, a testament to our commitment to providing you with unparalleled living experiences. Nestled in the heart of East Point Colony, this masterpiece is more than just a residential complex; it's a reflection of the harmonious blend of luxury, comfort, and stunning aesthetics. With its strategic location, thoughtful design, and panoramic views, Balaji East is set to redefine the way you envision home.



Project Overview

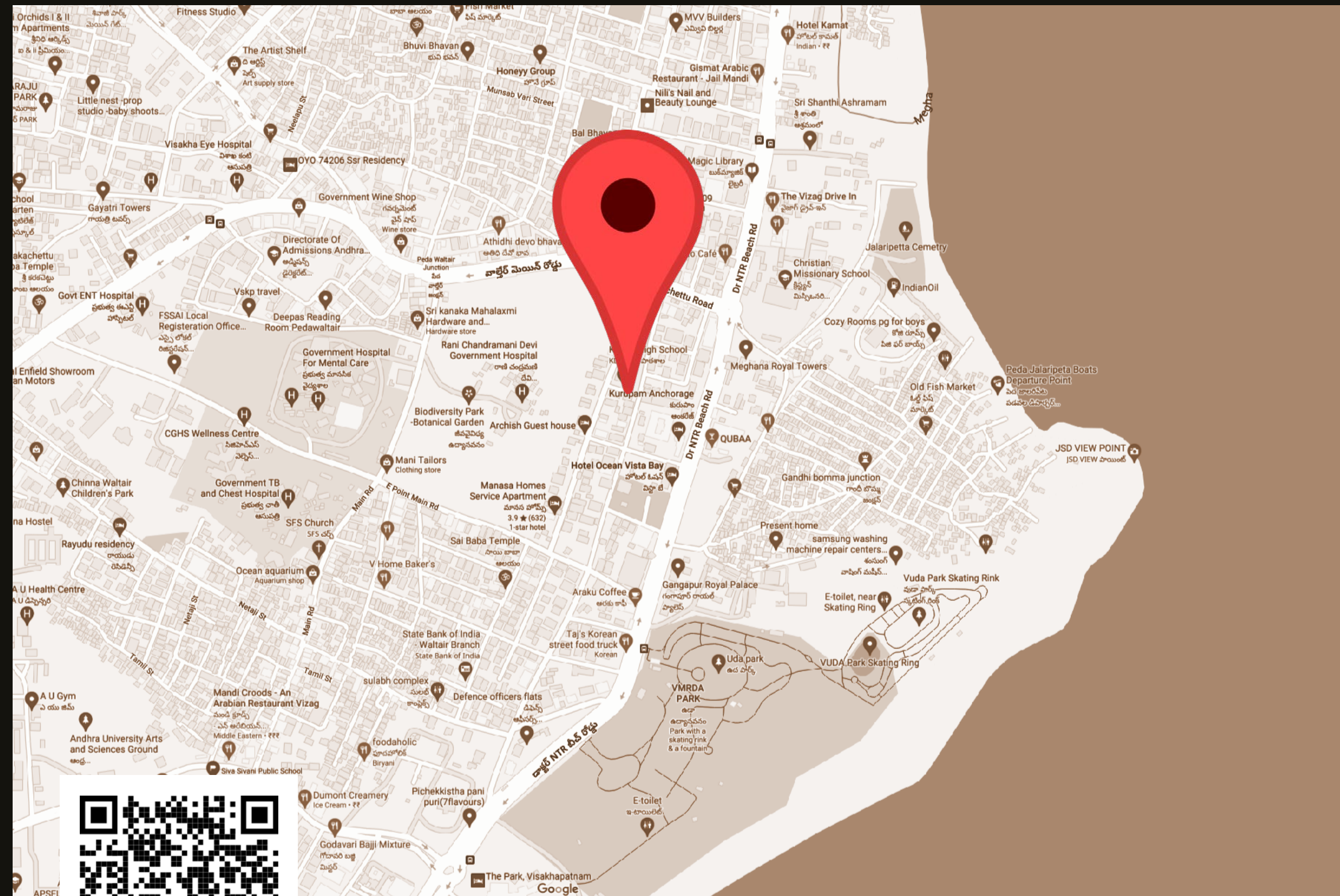
Balaji East stands tall as a symbol of modern living, comprising 10 residential floors that offer a total of 40 meticulously designed flats. Each floor hosts 4 spacious flats, ensuring a harmonious balance between community and privacy. The elegantly crafted layout ensures that each flat spans a generous 5000 square feet, providing ample space for you to create your dream haven.

10 FLOORS | 40 FLATS | 5000 sq.ft/FLAT | EAST & WEST FACING

Unmatched Views & Tranquility

For those who appreciate the beauty of nature, some of the Balaji East flats offer enchanting sea views. Imagine waking up to the sight of the sunrise painting the waves with golden hues, or unwinding after a long day while being serenaded by the soothing rhythm of the ocean. These exclusive flats are designed to provide you with a serene escape from the bustling city life, right from the comfort of your home.





Location: East Point Colony

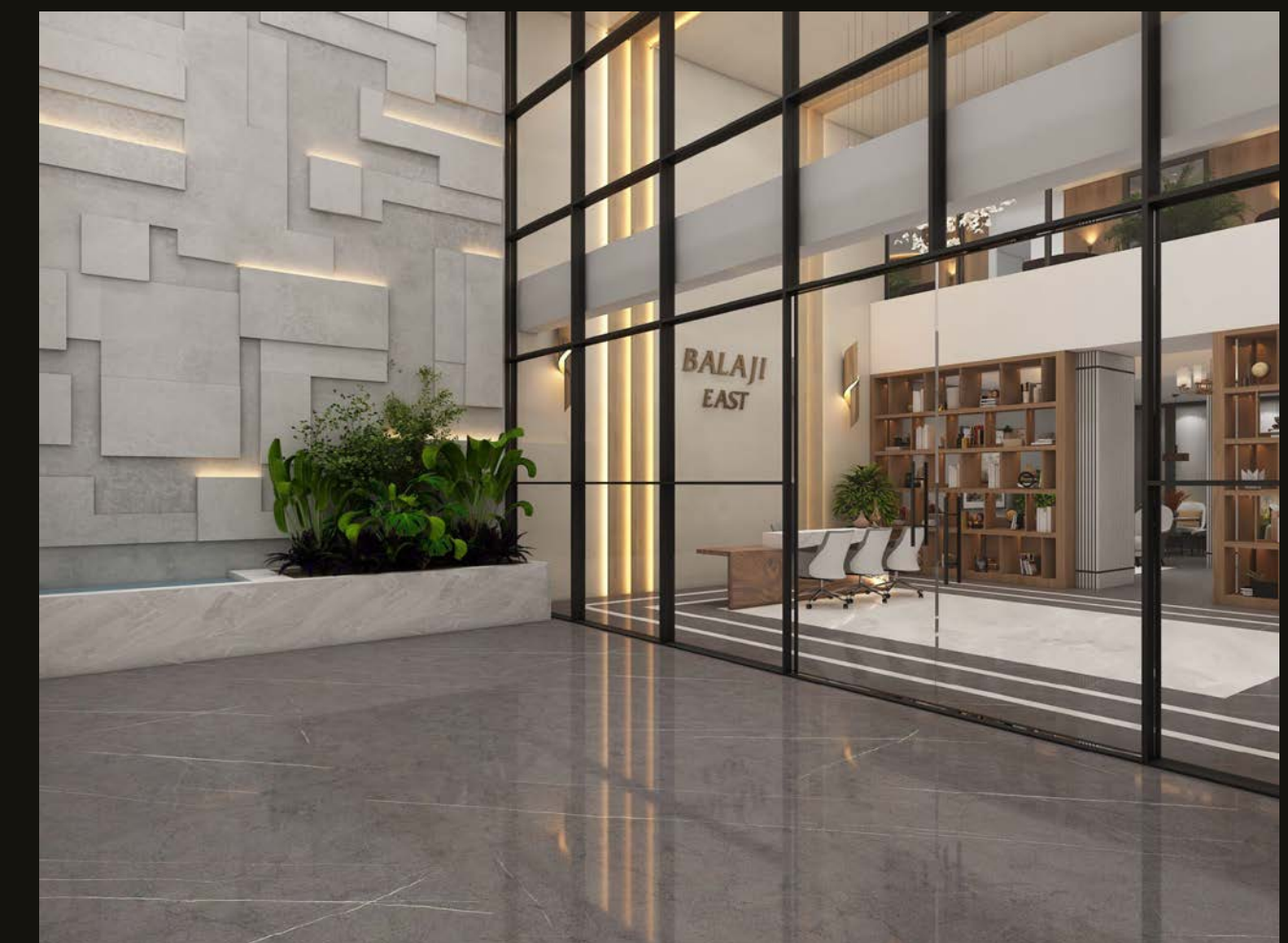
Balaji East's location in East Point Colony further enhances its appeal. This area is not only known for its tranquil environment but also for its convenience. You'll find yourself in close proximity to essential amenities, educational institutions, healthcare facilities, and entertainment hubs, making everyday life a seamless and enjoyable experience.



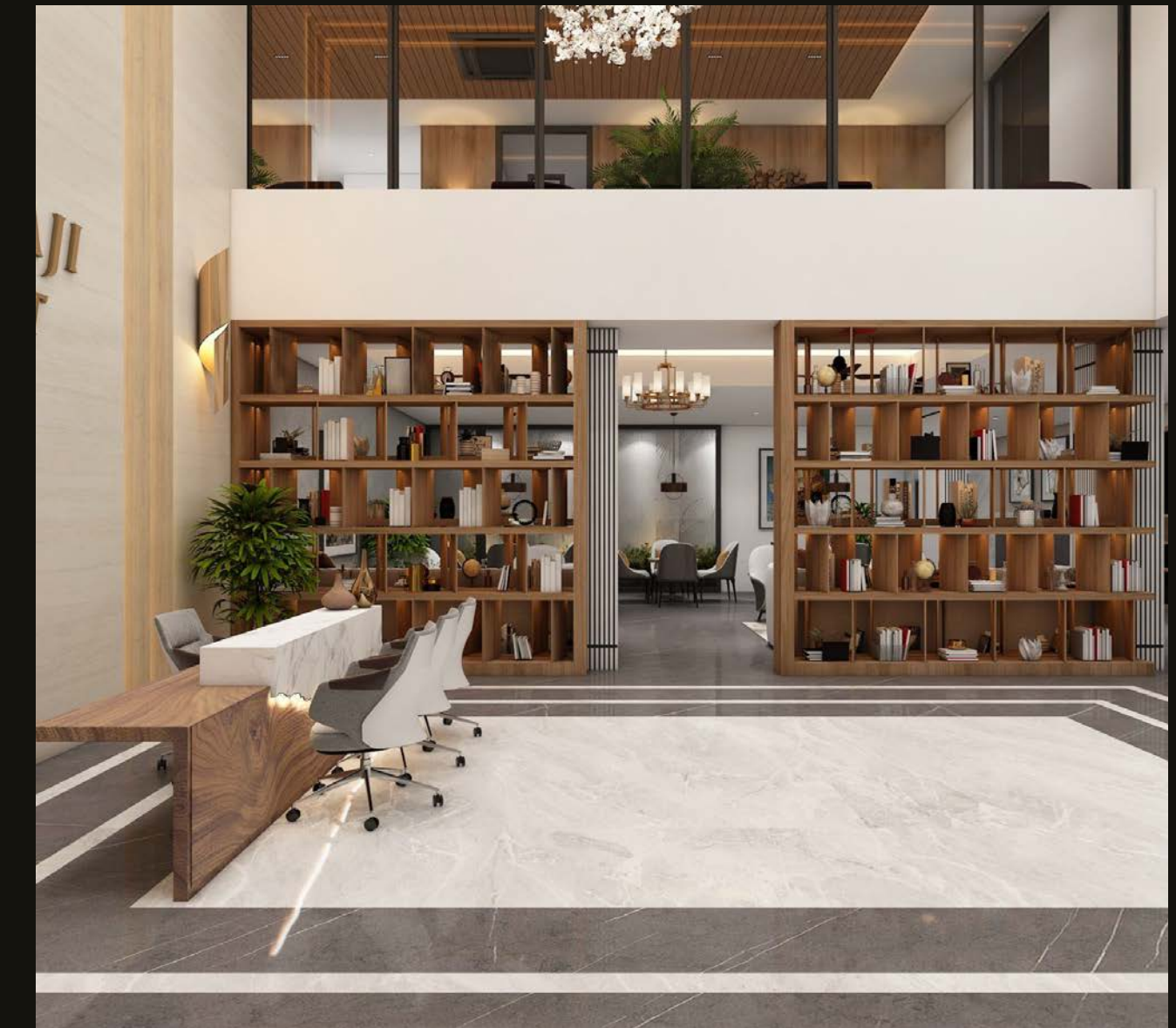
Experience Luxury

Balaji East isn't just a residential complex; it's a reflection of your aspirations, your taste for the finer things in life. From the opulent living spaces to the breathtaking views, every detail has been meticulously curated to provide you with an unparalleled living experience. Join us in embracing a life where luxury is not just a word – it's a way of life.

Come, be a part of Balaji East and experience the art of luxury living like never before. Your dream home awaits!



Portico Drop-Off Point



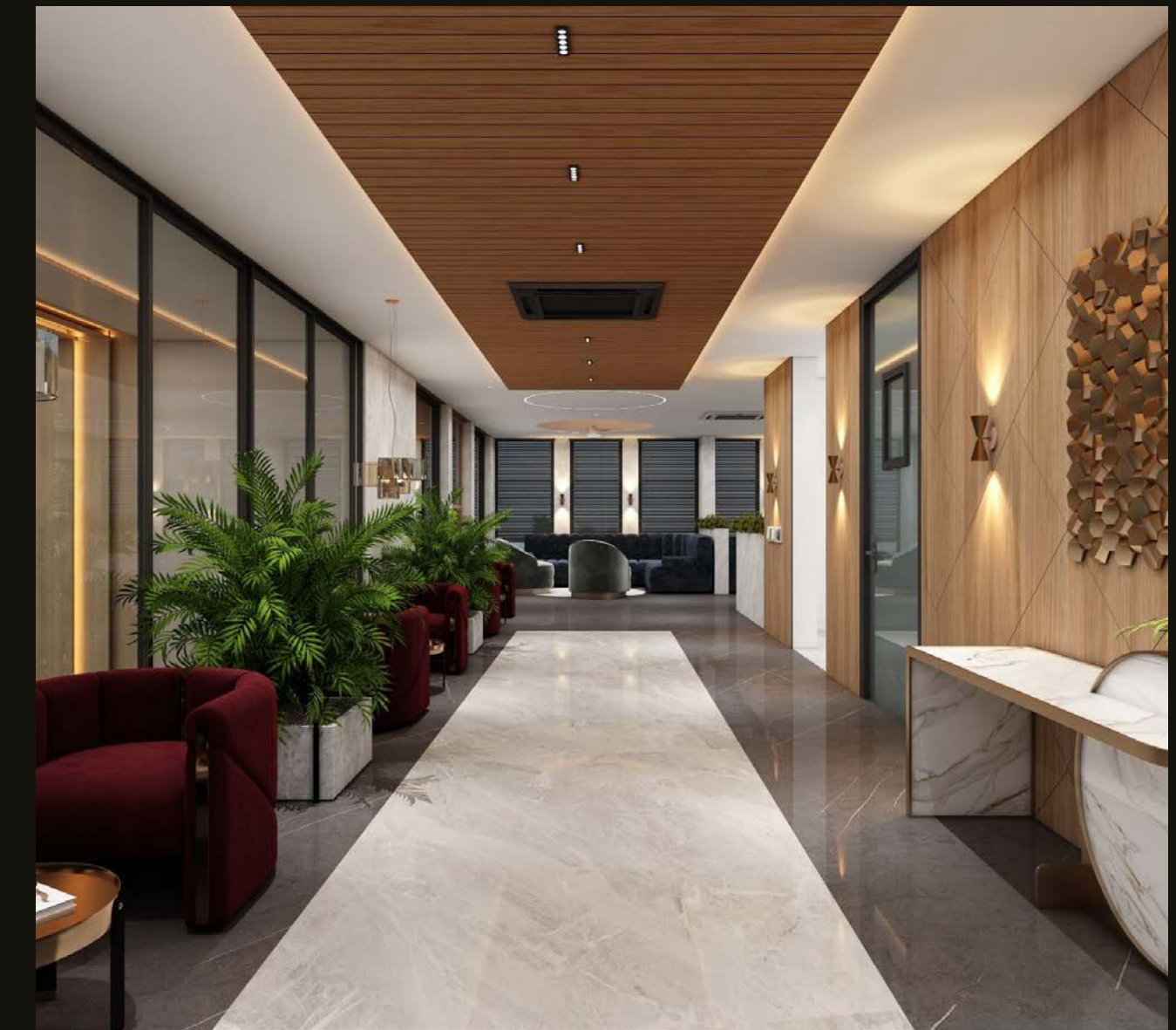
Elegant Double Height Lobby



Welcoming Waiting Lounge with Café



Designer Corridor



Banquet Entrance



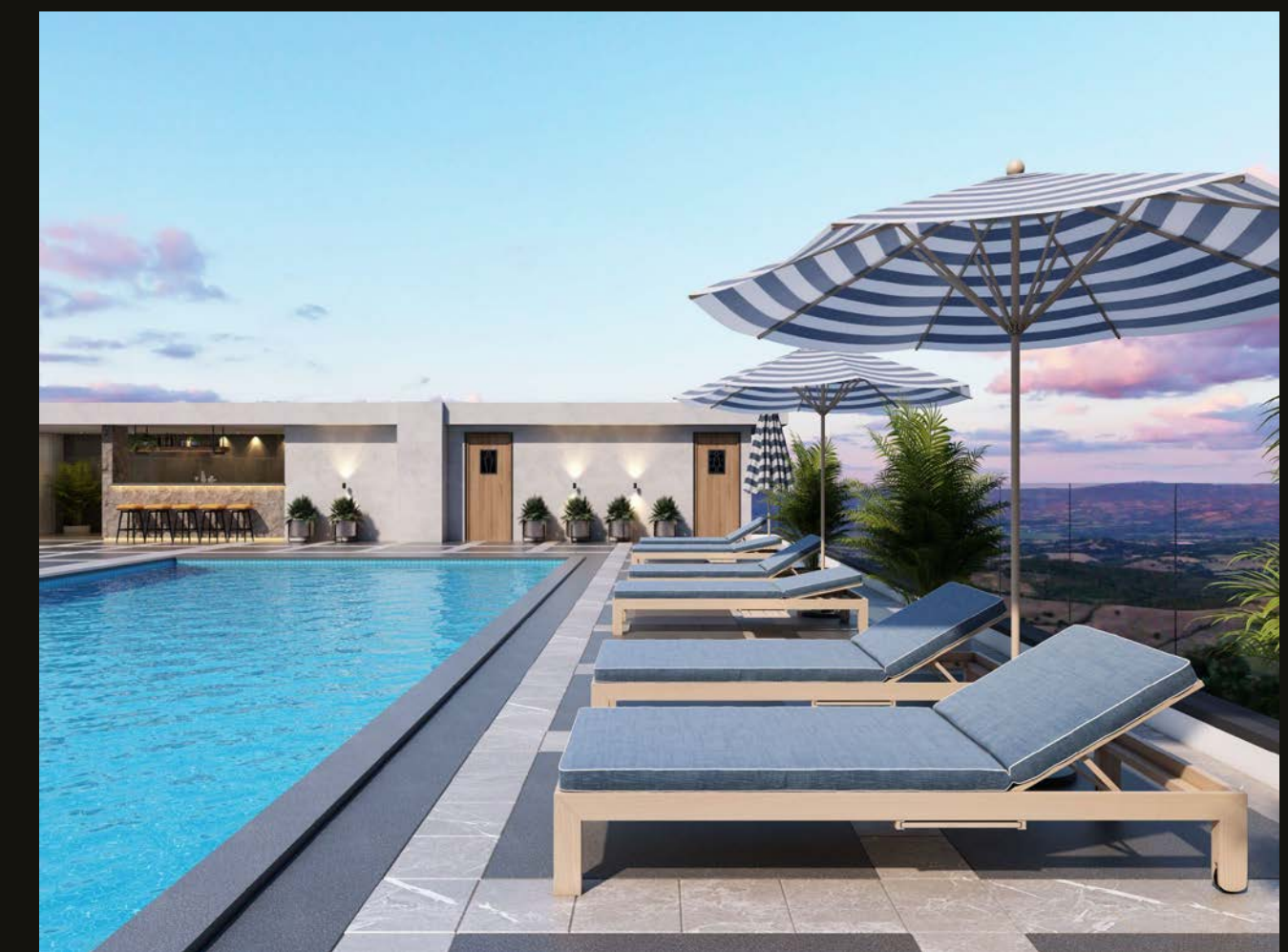
Chic Cocktail Lounge



Spacious Banquet Hall



State-of-the-Art Gymnasium



Rooftop Swimming Pool + Rooftop Bar + Serene Rooftop Garden

Salient Features

- ✓ Elegant Double Height Lobby
- ✓ Welcoming Waiting Lounge with Café
- ✓ Spacious Banquet Hall
- ✓ Well-Equipped Banquet Kitchen
- ✓ Chic Cocktail Lounge
- ✓ State-of-the-Art Gymnasium
- ✓ Reliable Municipal Water Supply
- ✓ Indoor Kids Play Area
- ✓ Tranquil Yoga / Meditation Room
- ✓ Engaging Board Games Area
- ✓ Skilful Pool Table
- ✓ Classic Snooker Table
- ✓ Rooftop Swimming Pool
- ✓ Uninterrupted 100% Power Backup
- ✓ Rooftop Bar
- ✓ Serene Rooftop Garden
- ✓ Grand Main Entrance
- ✓ Convenient Guest Drop-off Porch
- ✓ Designer Corridor
- ✓ Outdoor Kids Play Area
- ✓ Tata Sky Services
- ✓ Separate Staff Entry
- ✓ Dedicated Staff Elevator
- ✓ Emergency Hospital-Style Elevator
- ✓ Round-the-Clock Security
- ✓ Efficient Visitor Management Software
- ✓ Effective Boom Barrier
- ✓ High-Speed Internet Connectivity
- ✓ Access Controlled Building Entry
- ✓ Comprehensive CCTV Coverage
- ✓ Scenic Walking Track
- ✓ Artistic Designer Landscape
- ✓ Environment-Friendly Rainwater Harvesting
- ✓ Water Softener
- ✓ Efficient Intercom System

Floor Plans

Flat #1

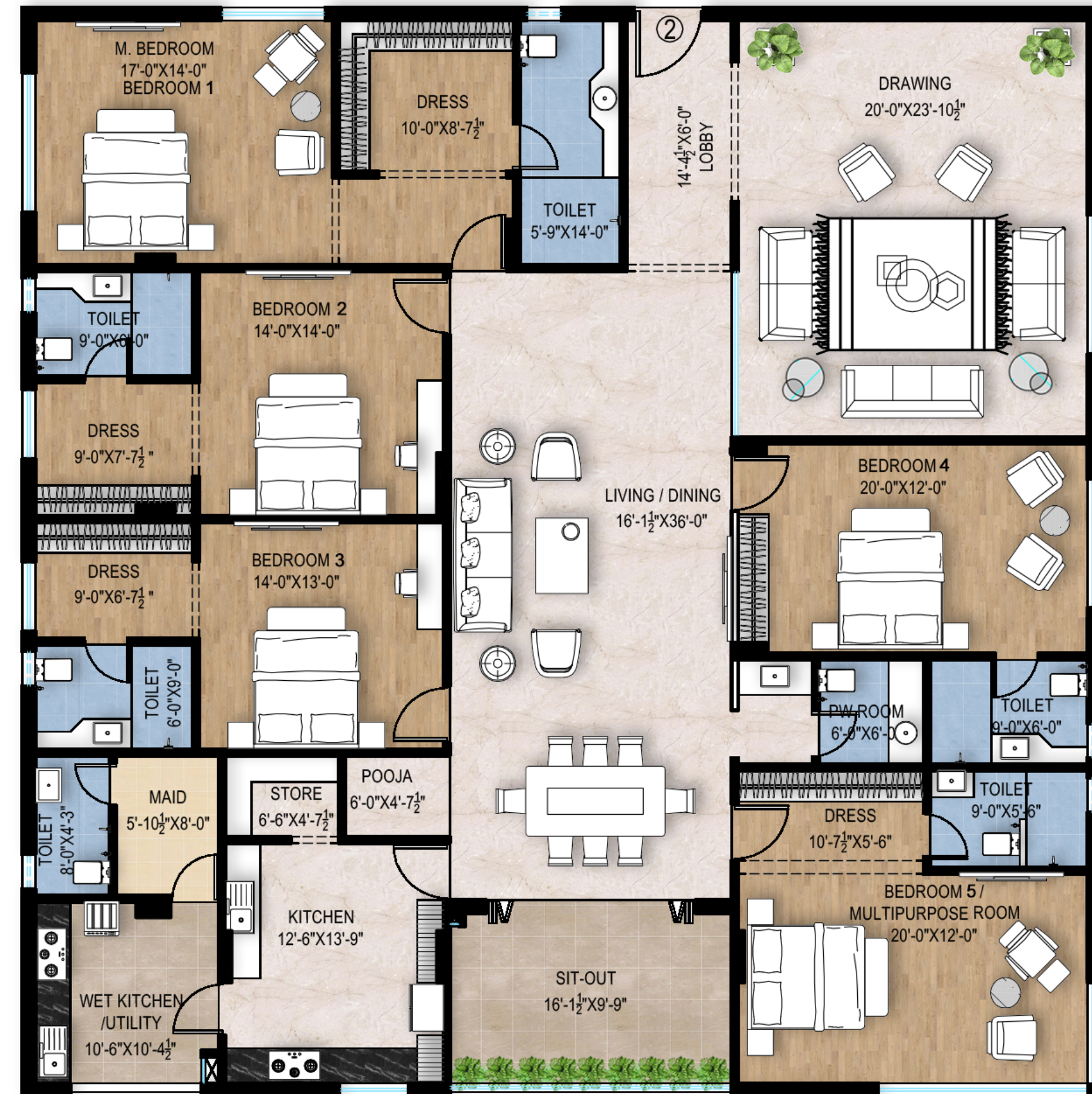
West Facing



FLAT NO - 1

AREA	CARPET AREA	BALVER AREA	OUTER WALL AREA	PLINTH AREA	COMMON AREA	SALABLE AREA
SFT	3535	316	188	4039	1212	5251

Flat #2 West Facing



FLAT NO - 2

AREA	CARPET AREA	BALVER AREA	OUTER WALL AREA	PLINTH AREA	COMMON AREA	SALABLE AREA
SFT	3374	294	183	3851	1155	5006

Flat #3

East Facing



FLAT NO - 3

AREA	CARPET AREA	BALVER AREA	OUTER WALL AREA	PLINTH AREA	COMMON AREA	SALABLE AREA
SFT	3442	229	180	3851	1155	5006

Flat #4

East Facing



FLAT NO - 4

AREA	CARPET AREA	BALVER AREA	OUTER WALL AREA	PLINTH AREA	COMMON AREA	SALABLE AREA
SFT	3453	203	195	3851	1155	5006

Typical Floor Plan





BROCHURE

BALAJI EAST

BALAJI CONSTRUCTIONS



WWW.BALAJIASSOCIATES.COM

+91-891-2565053
+91-90105 91919

bcc.balaji@gmail.com

Disclaimer: This Brochure Is Based On Conceptual Designs And Is An Artistic Impression & Cannot Be Used As A Legal Document. The Promoters, Developers & Architect May Change/alter Designs , To Suit Any Functional Requirement Of The End User.

